

Alvius

Wheat

Spring 2026 has an air of déjà vu with our November-agreed seed crop of Alvius destined for drilling later the same month after sugar beet, actually being drilled on the 19 March.

The same grower had an almost identical experience in autumn 2021/spring 2022 when seed arrived late from Germany missing the November-drilling window. The crop was eventually drilled 3 February 2022.

These near duplicate scenarios illustrate clearly the flexibility of Alvius wheat. A sowing window that runs from mid-October to end of March.

In both instances factors beyond the control of the grower delayed drilling and rather than forcing the crop into the ground in less-than-ideal conditions, Alvius allows growers to wait and to drill when the seedbed is in a healthier state, avoiding compaction, potentially a problematic seedbed and subsequent emergence and establishment issues.

Alvius

Group 4 Hard

- Alvius offers an alternative functionality to crop establishment in 21st Century farming
- Ideally suited to follow roots where seedbeds may be compromised, Alvius has a six-month drilling window
- Alvius has not been through the UK VL trials process so cannot be directly compared to other wheats in this brochure
- For further reading, please visit the Alvius page in the wheat varieties section of our website: www.agrovista.co.uk/seeds/wheat-varieties/alvius

Mildew	7	
Yellow rust	(6)	
Brown rust	(6)	
Septoria tritici	(6)	
Fusarium	6	
Resistance to lodging	(7)	
Eyespot	-	
OWBM	-	
Maturity	-2 -1 (0) 1 2	

REGION	YIELD
--------	-------

Yield assessments to date based on sowing month rather than soil type. Yields and specific weight in Agrovista trials have nevertheless ranged from KWS Extase to exceeding KWS Dawsum. Generally drilling Nov-Jan for best results

Spec. weight (79)

Bracket values give guidance on comparative agronomic values based on commercial observations and Agrovista trial performance.

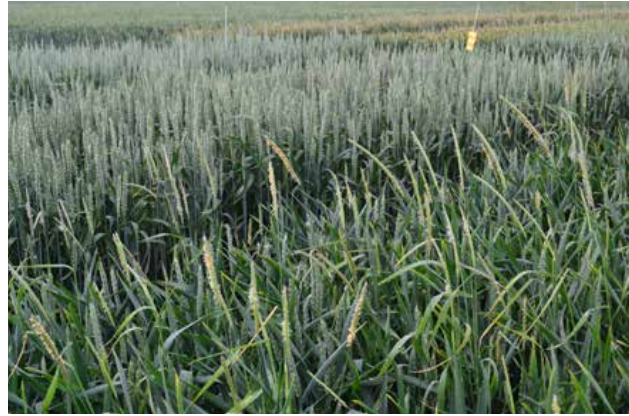


Alvius took off like a rocket, and I was initially worried about it lodging but I needn't have. Having applied a growth regulator, the crop still produced plenty of straw, yet stood well

Luke Hardy
Agrovista agronomist



Alvius – wide leaf



Alvius had fewer blackgrass heads per plot (165) than traditional winter wheats

Rapid establishment

Alvius has been bred to rapidly establish following late-lifted crops such as sugar beet, potatoes, maize or vegetables and it is well suited to this task. The seed has high vigour and a tendency to carry on growing through late spring frosts while true spring wheat can often be checked.

The secret with Alvius is that it is not simply a spring wheat, but a three-way cross that widens its sowing window across six months from mid-October to mid-April as experienced in 2023 where a very wet autumn and spring left much land undrilled – not dissimilar to 2025/6 in fact.

“Alvius took off like a rocket, and I was initially worried about it lodging but I needn't have. Having applied a growth regulator, the crop still produced plenty of straw, yet stood well” Luke Hardy, Agrovista agronomist

Grassweed smothering

Alvius has a wide leaf and rapid spring growth which helps toward grass weed control. In 2022 our fenland November-drilled trial was established in appalling conditions (see above) and as a consequence pre-emergence herbicides were not applied and PGRs were applied at a reduced rate to minimise crop stress.

Blackgrass populations were evident through the trial. It was notable that Alvius had fewer blackgrass heads per plot (165) than traditional winter wheats, as the picture (top right) shows with KWS Cranium in the foreground (600+). Note this was an observation only, no precise head counts were undertaken.

Haddenham Drilled 26 November 2020
(all sown 450 seeds/m²)



Treated		
Variety	Yield t/ha	Spec weight kg/hl
CHAMPION	11	59.5
MINDFUL	10.87	64.6
ALVIUS	10.83	69
INSITOR	10.57	62.9
KERRIN	10.23	61.5
DAWSUM	9.94	62.7
EXTASE	9.85	63.1
KWS CRANIUM	9.74	57.7

SOURCE: extract of Yield results AgX Haddenham harvest 2021. Alvius v key winter wheats. NB. Champion and Insitor seed were Vibrance Duo treated.

Alvius produces a high specific weight and a milling profile equivalent to group 1 and 2 varieties. However, the variety has not been AHDB-trialled and consequently it carries no Group rating.

Alvius wheat is a management tool for growers to address the late drilling situation that always arises when late-harvested break crops clash with typical British autumnal weather. Growers can confidently purchase seed in November knowing that the seed will be drilled whatever the weather. It can accommodate cold, wet, soils and rapidly establishes while day length shortens. Alvius has quick spring growth and stands well through to harvest.