



Inspiring
change...

**Boost
your plants'
solar panels**

Klorofill®

growing through **innovation**

*A unique crop enhancer
for cereals that improves
chlorophyll production and
maximises green leaf area.*

Boost your plants' solar panels

How it works

Klorofill® contains pentanoate - an organic keto acid-based compound that is a unique biological precursor to chlorophyll synthesis. Pentanoate reverses the chlorophyll suppression that a plant may experience during rapid growth, for example, at flag leaf stage.

By increasing chlorophyll production, Klorofill maximises green leaf area and plant biomass, boosting crop growth and therefore yield.

CE CE marked in accordance with the EU Fertilising Products Regulation (EU) 2019/1009, confirming compliance with EU-wide standards for safety, quality, and efficacy.



Benefits

Klorofill offers the following benefits:

- **Increased photosynthetic rate and chlorophyll production**
- **Maximised green leaf area**
- **Enhanced plant biomass**
- **Improved nutrient efficiency**

*Klorofill is a unique
crop enhancer that
**improves chlorophyll
production and
maximises green
leaf area.***





Untreated



Klorofill*

19%
*increase in
chlorophyll*
*compared to
competitor
product*


Results

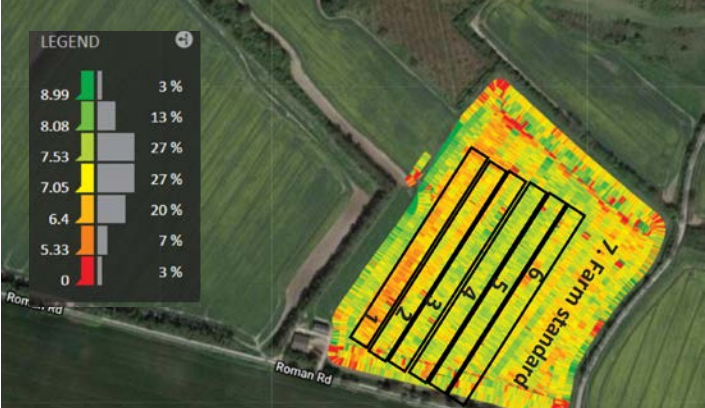
Boosting chlorophyll content

Compared to a competitor amino acid product, Klorofill at 1.0l/ha offers an additional 19% increase in Mg/cm² of chlorophyll.

A trial from 2019 demonstrates a visible improvement in green leaf area.

This is also shown in the following yield map of spring barley, captured from an independent trial. Plots 4 and 5 were treated with Klorofill at 1.0l/ha, with the same nitrogen regime as farm standard plot 7.

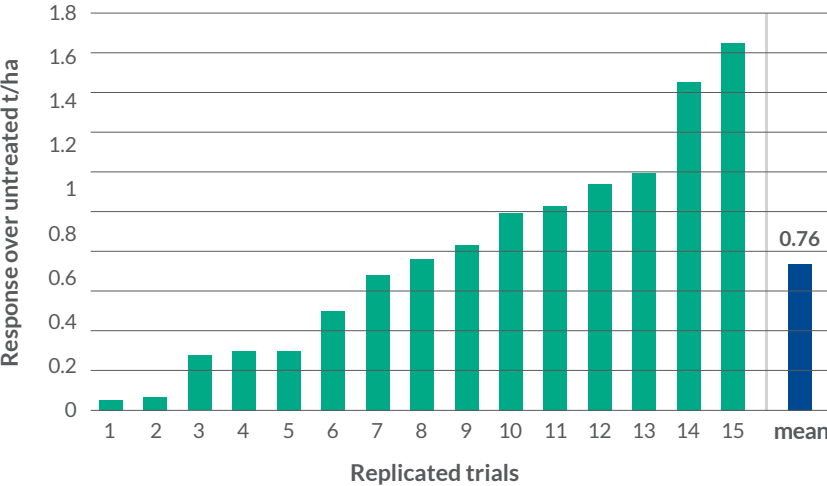
Product	Mg/cm ² chlorophyll	% change
Competitor product (2l/ha)	0.0367	
	0.0435	19%



What this means for you

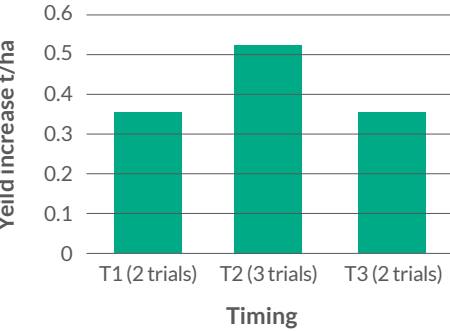
Replicated manufacturer trials conducted 2018/19 in Suffolk demonstrated that Klorofill can increase winter wheat yield by 0.76t/ha, compared to untreated.

Yield response in winter wheat



By selecting a targeted approach to Klorofill application, growers can maximise the impact of the product. A series of winter wheat trials by Envirofield in 2018 demonstrate the effectiveness of using Klorofill at T2 timing.

Comparison of application timings in winter wheat



Application

Crop	Rate	Application timing range
Winter cereals (excluding malting barley)	1.0l/ha	GS 21-45
Spring cereals (excluding malting barley)	2 x 1.0l/ha	GS 21-59
Malting barley	1.0l/ha	Up to GS 31
Oilseed rape	1.0l/ha	Up to final pod set

*Suggested timings, for label information, speak to your BASIS-qualified advisor

Other features

- Liquid formulation
- Tank mixable
- 10L pack size

Contact your local Agrovista agronomist today, to discuss our Innovation Range and how these exciting new products can support you.



Agrovista UK Limited

Rutherford House
Nottingham Science
& Technology Park
University Boulevard
Nottingham
NG7 2PZ

T: 0115 939 0202

F: 0115 939 8031

E: enquiries@agrovista.co.uk

Follow us on social media:



www.agrovista.co.uk